

AUTUMN- TYPOGRAPHY

YEAR 5

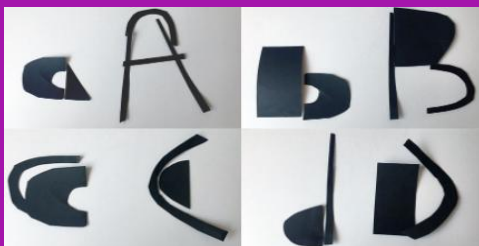
KEY VOCABULARY

| | |
|----------------|---|
| Typography | arranging letters and text in a way that makes them readable and visually appealing |
| Font | the size and weight of letters |
| Collage | a piece of art made by sticking various different materials such as photographs, pieces of paper or fabric on to a backing. |
| Mark making | describes the way artists produce different lines, dots, marks, patterns and textures |
| 3-dimensional | having or appearing to have three dimensions (= length, width, and height) |
| Graphic Design | the art or skill of combining text and pictures in advertisements, magazines, or books. |
| Contrast | when noticeable differences occur between two or more visual elements. e.g colour, size, weight etc. |
| Emphasis | can help to focus attention in a specific area of text, words or letters. |
| Typeface | a set of letters that share a similar shape and design |
| Calligraphy | the art of beautiful handwriting using specific tools and techniques |



Louise Fili, born on April 12, 1951, is an American graphic designer renowned for her adept use of typography and commitment to quality design. Her artistic inspiration derives from her passion for Italy, Modernism, and European Art Deco styles.

Hogwart's Map



regular
thin
italic
bold
large
small

