



# Welcome!

## Year 5 Coffee Afternoon

Mrs Goodman

# Meet the staff:



Mrs Goodman  
Y5 Class Teacher

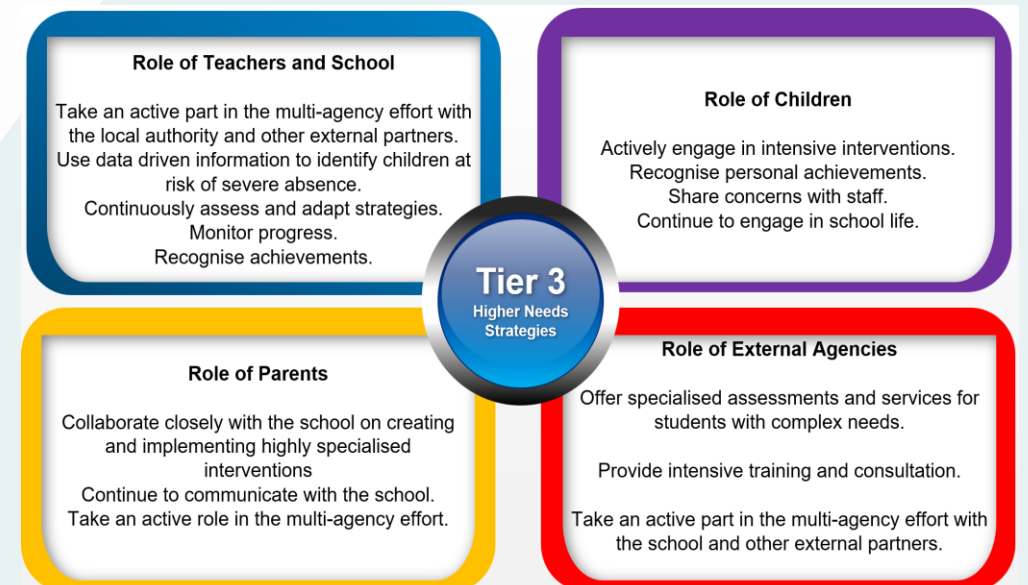
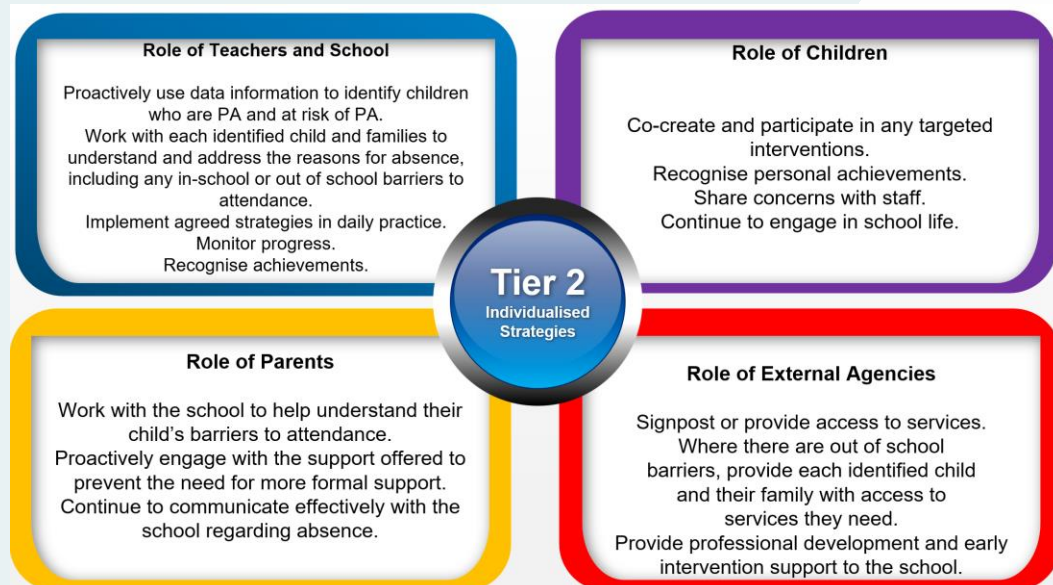
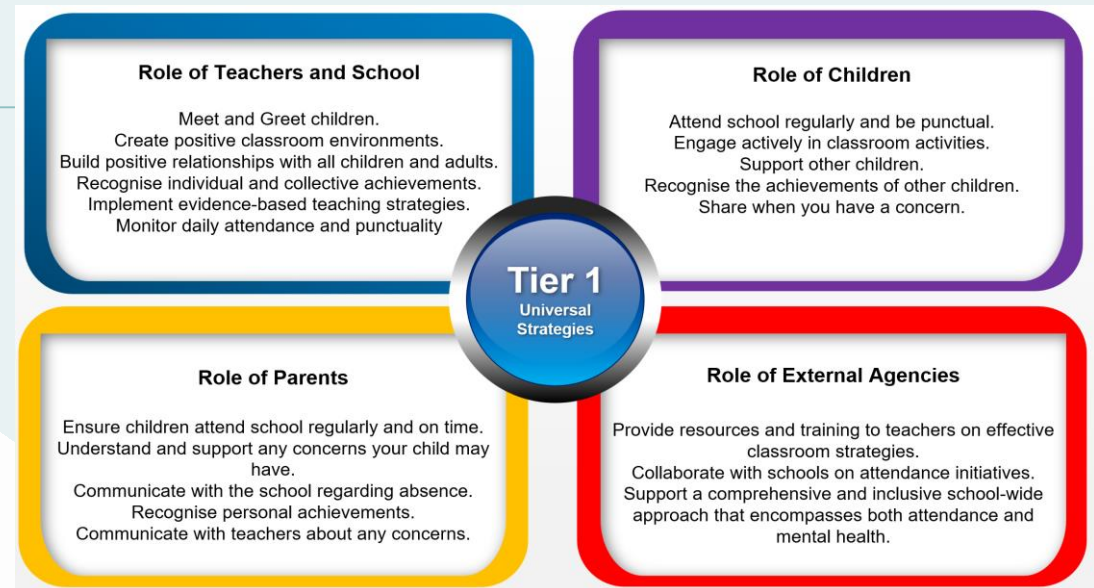


Mrs Mailey  
Y5 Teaching Assistant



Miss Jones  
Classroom Assistant

# Attendance





# Year 5 Curriculum



Year 5	Autumn 1	Autumn 2	Spring 1	Spring 2	Summer 1	Summer 2	
		The Anglo Saxons		The Islamic Age	The Ancient Greeks		<b>History</b>
	Global Trade (inc Fairtrade)		UK Snowdonia, Giant Causeway, Loch Ness		PGL Visit Orienteering	North & South America – The Amazon Rainforest	<b>Geography</b>
	Space	Materials		Forces	Animals (inc Human)	Living Things & Habitats	<b>Science</b>
					Human Life cycle	Animal Life Cycles	
	Access Art Typography & Maps		Access Art Fashion Design		Access Art Architecture: Dream Big or Small		<b>ART</b>
		Food Soup of the Day		Mechanisms Automata Toys - Cams		Textiles Felt Phone Cases	<b>DT</b>
	Do you have a pet?	The Date	My Home	Clothes	The Olympics	Habitats	<b>MFL</b>
							<b>Music</b>
	Net & Wall Invasion	Invasion Striking & Fielding	Invasion Dance	Net & Wall Swimming	Gymnastics OAA	Gymnastics Athletics	<b>PE</b> External Teacher



# Knowledge Organisers

- Key learning displayed
- Images that will be used with children throughout the topic
- Key vocabulary identified
- Found on our class pages - quiz your children!

## AUTUMN- TYPOGRAPHY

YEAR 5

### KEY VOCABULARY

Typography	arranging letters and text in a way that makes them readable and visually appealing
Font	the size and weight of letters
Collage	a piece of art made by sticking various different materials such as photographs, pieces of paper or fabric on to a backing.
Mark making	describes the way artists produce different lines, dots, marks, patterns and textures
3-dimensional	having or appearing to have three dimensions (= length, width, and height)
Graphic Design	the art or skill of combining text and pictures in advertisements, magazines, or books.
Contrast	when noticeable differences occur between two or more visual elements. e.g colour, size, weight etc.
Emphasis	can help to focus attention in a specific area of text, words or letters.
Typeface	a set of letters that share a similar shape and design
Calligraphy	the art of beautiful handwriting using specific tools and techniques



**LOUISE FILI**

Louise Fili, born on April 12, 1951, is an American graphic designer renowned for her adept use of typography and commitment to quality design. Her artistic inspiration derives from her passion for Italy, Modernism, and European Art Deco styles.

Hogwart's Map





regular  
thin  
italic  
bold  
large  
small



# RSE: Journey in Love



- ❖ RSE forms a part of the PSHE, RE and Science Curriculum.
- ❖ As from September 2020, all primary school children learn about relationships and health.
- ❖ As a Catholic School, St Alberts adopted the '*Journey in Love*' programme to deliver RSE as this is the programme approved by the Diocese.
- ❖ Our curriculum is designed to be appropriate for your child's age and development stage, and sensitive to the needs and religious backgrounds of all children in our care.
- ❖ '*Journey in Love*' is delivered in all year groups:
  - Reception: God loves each of us in our uniqueness
  - Year 1: We meet God's love in our family
  - Year 2: We meet God's love in the community
  - Year 3: How we live in love
  - Year 4: God loves us in our differences
  - Year 5: God loves me in my changing and development
  - Year 6: The wonder of God's love in creating new life

# Year Five - God loves me in my changing and development



Children become aware of the physical and emotional changes that accompany puberty - sensitivity, mood swings, anger, boredom, etc. and grow further in their understanding of God's presence in their daily lives.

## Physical and intellectual

Identify and celebrate the ways I have changed since birth

Discuss the external and internal changes which happen to boys and girls in puberty.

Recognise that sexual development is a natural part of human growth and that physical changes from child to adult means the ability and potential to become a mother or father.

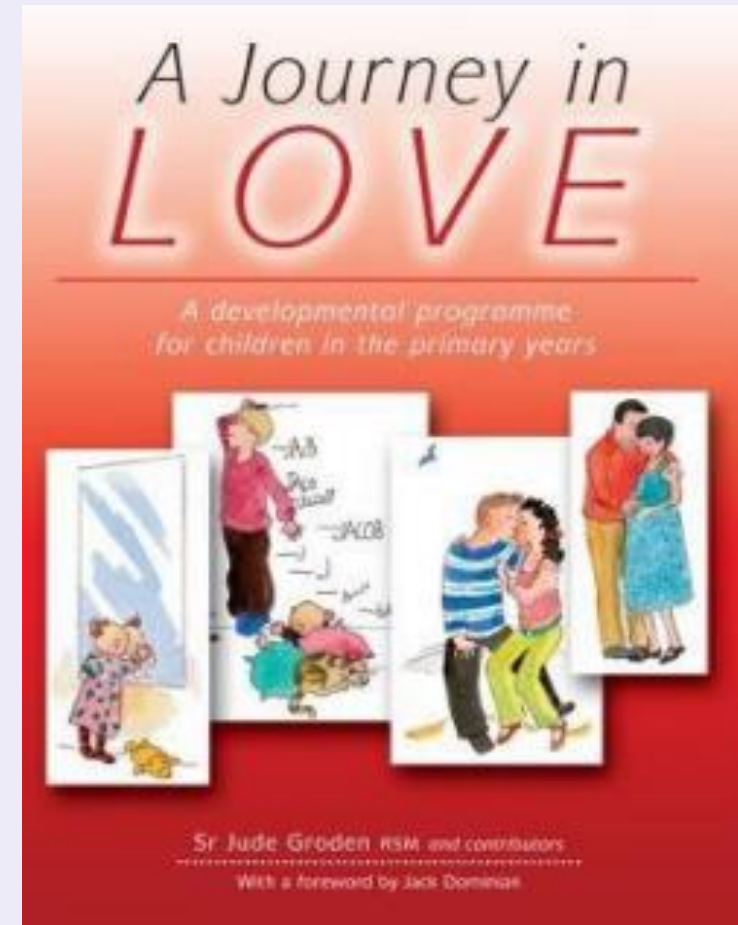
## Social and Emotional

Recognise behaviour changes as we grow up. Expectations are different and are often dependent on our experiences, our treatment by others and our view of the World in which we live.

Reflect on the ways to become more sensitive to the emotional development of oneself and others.

## Spiritual

Ask children to share their understanding of change through poetry, prayer, art etc. Share with each other and celebrate the wonder of change.



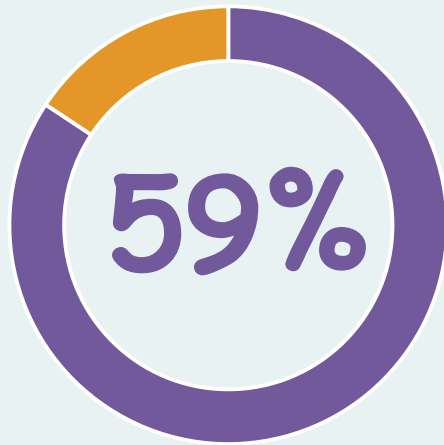


# How do you keep up with online safety?

This academic year we will be doing a lot with our children around how to keep safe online. The only way we can effectively keep our children safe, is with parental support and parents understanding the risk presented to children online.

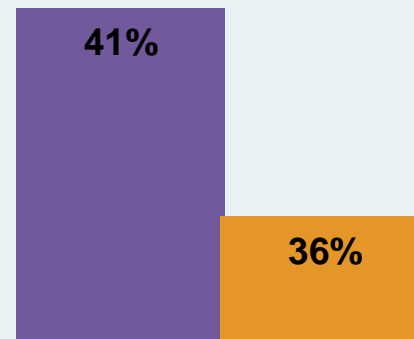


# The positives of being online...



of children say the internet has a positive impact on their wellbeing\*

■ 2023 ■ 2022



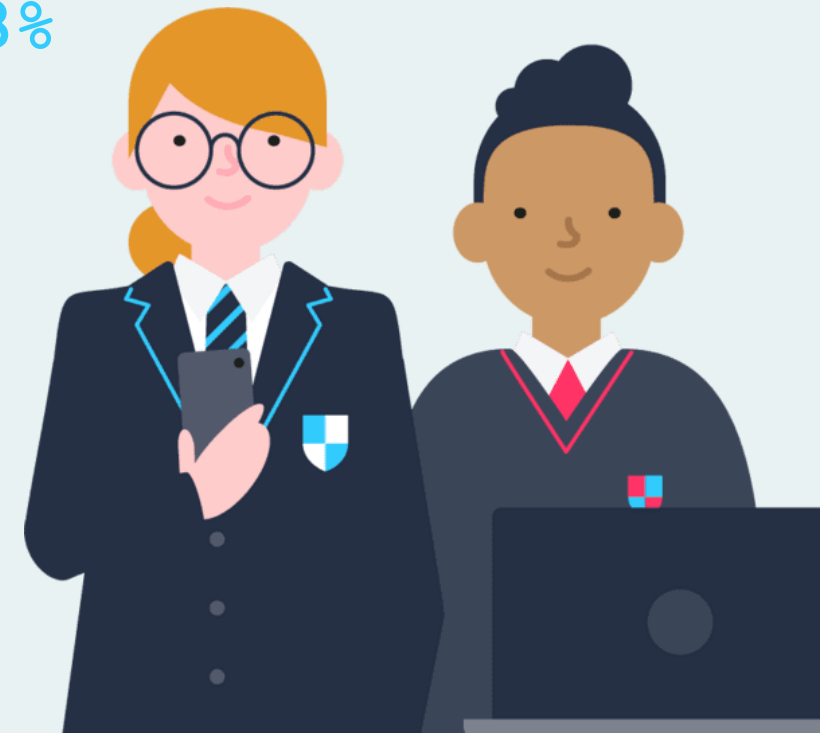
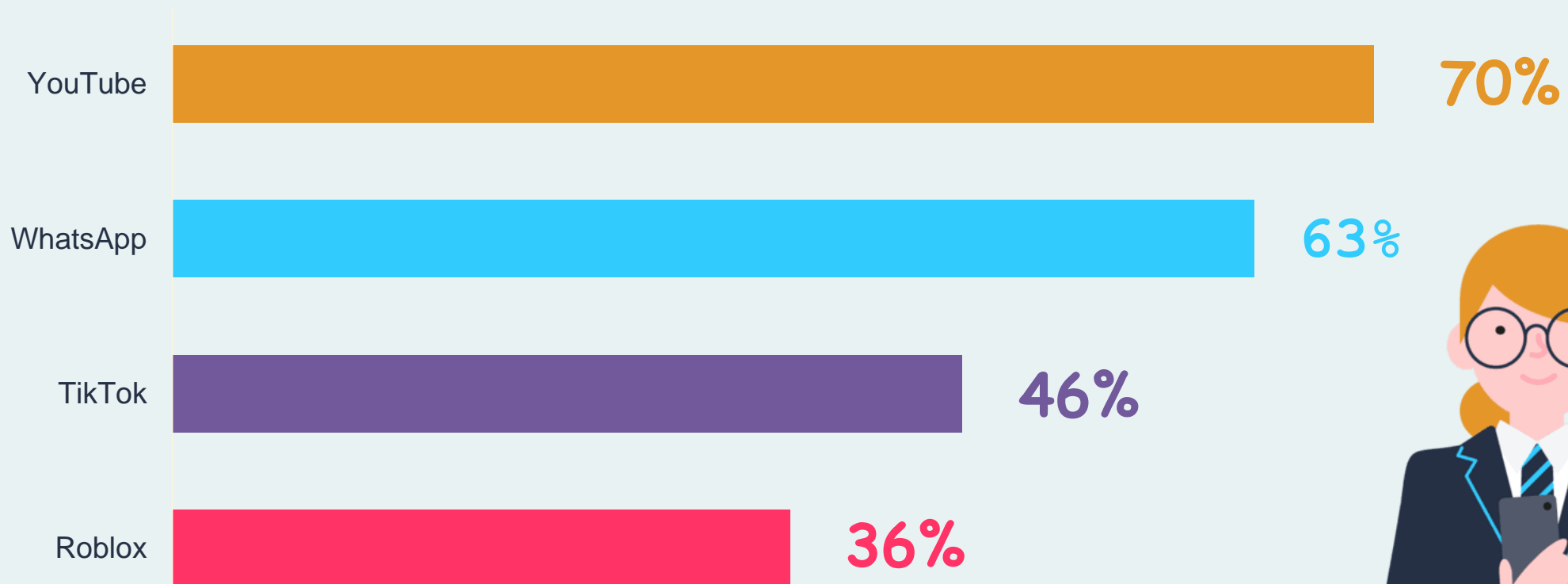
% of children who say spending time online makes them feel confident\*\*



of children say the internet/tech is important for their independence\*\*



# What they're doing online...





# The potentially negative impacts...

- **Sleep cycles** are often affected by blue light from too much screen use, which can **impact their daytime activities** like school;
- Excessive screen use might result in **less movement**, leading to **physical health issues**
- Platforms use **persuasive design** to keep people using it, which children are particularly **vulnerable** to
- More time online means more opportunity to come across **potential harms**.





# Dealing with inappropriate CONTENT



## What to talk about

- They can come to you if they see anything that upsets them
- The importance of respect for each other and the meaning of consent
- If they have seen online pornography, talk about the unrealistic image of sex and relationships it presents

## Top tips & tools

Parental controls on home broadband

Content locks on mobile networks

Safe search on browser search engines (or use child-friendly search engines)

Content controls in the apps they use or games they play



# Inappropriate content

- 27% of children see pornography by age 11
- Around 1 in 10 children report seeing pornographic or violent content online. This increases with age.
- Children with vulnerabilities are more likely to come across these things - especially violent content.
- Parental controls can help limit access to certain websites, content and more. It's also important for your child to report any inappropriate content they accidentally come across.



At The National College, our **WakeUpWednesday** guides empower and equip parents, carers and educators with the confidence and practical skills to be able to have informed and age-appropriate conversations with children about online safety, mental health and wellbeing, and climate change. Formerly delivered by National Online Safety, these guides now address wider topics and themes. For further guides, facts and tips, please visit [nationalcollege.com](https://nationalcollege.com).

# What Parents & Educators Need to Know about SNAPCHAT

With over 100 million active monthly users and billions of 'Snaps' sent each month, Snapchat is a popular messaging app among children and young people. It allows users to share fun, spontaneous pictures and videos with friends and family while using playful filters. One of Snapchat's unique features is that pictures, videos and messages are only viewable for a short period of time.

**SNAP STREAK 97**

**WHAT ARE THE RISKS?**

**ARTIFICIAL INTELLIGENCE**

Snapchat's use of artificial intelligence (AI) includes features like the My AI chatbot and AI-powered filters, offering personalised experiences that can be fun but also pose risks. These tools may share with third or fourth party advertisers, potentially circumvent security standards, and collect personal data. Advanced filters and developer-style lenses can distort reality, potentially leading to misrepresentation, impersonation, or inappropriate content.

**SCREEN ADDICTION**

Snapchat boosts user engagement and daily use with features like streaks. Daily Snapchat exchanges between you and a friend, where a streak's been going for a few days, users will see a 'streak' icon. The number alongside it shows the number of days, but if users miss a day and break the streak, the only way to restore it is to pay. This encourages daily use habits, and frequent notifications can keep users returning to the app even more often.

**SEXUATION**

Because Snapchat is a disappearing messenger, adults may face a sense of safety, which may become targets of marketers. For example, a predator may pressure someone into sending nude images, then blackmail them by threatening to share the images with friends or family unless money is paid.

**SNAPCHAT**

Snapchat is the platform's premium subscription service, offering early access to new and exclusive features. In June 2023, Snapchat introduced a new tier called Lens+, giving subscribers access to hundreds of lenses and AR experiences for playing, creating, and sharing snaps. These paid features may encourage young users to spend money to access exclusive content, increasing the risk of overspending or feeling pressured to make in-app purchases.

**ACCESSIBILITY**

Snapchat is now accessible from a web browser, meaning children can use it on a laptop or tablet without downloading the app. This can make it harder to monitor, reduce the effectiveness of parental controls, and increase the risk of unauthorised communication or exposure to inappropriate content.

**INAPPROPRIATE CONTENT**

Some content on Snapchat isn't suitable for children. The features used to group content are determined by the poster, so even an innocent search term could still yield age-inappropriate results. The app's disappearing message feature also makes it easy for young people to share explicit images or language. No setting continues to be a risk associated with Snapchat.

## Advice for Parents & Educators

**ACCESS THE SNAPCHAT FAMILY SAFETY HUB**

Overlaid with guidance from Common Sense Media, Snapchat has developed a Family Safety Hub that explains how the app works and how to use its in-app parental controls. It is recommended that you review this guidance before allowing a child to download Snapchat. Remember, the app is only intended for children aged 13 and over.

**ENCOURAGE OPEN DISCUSSIONS**

Snapchat's risks can be easier to handle if you nurture an open dialogue. Talk about scams and blackmail before letting children sign up. If they're faced with a scam, encourage them to tell you immediately, both openly and non-judgmentally about sexting, emphasising its inherent risks. Furthermore, explain how popular 'challenges' on the platform can have harmful consequences.

**USE PRIVACY SETTINGS TOGETHER**

Go down with the children in your care and explore Snapchat's privacy settings as a shared activity. You can help them adjust who can contact them, view their stories, or see their location on Snap Map. It's a good opportunity to explore why some settings are safer than others, reinforcing their understanding of online boundaries. Encourage them to regularly review these settings, especially after app updates or changes to their friendship groups.

**BLOCK AND REPORT**

If a stranger connects with a child on Snapchat and makes them feel uncomfortable or pressures them to send or receive unwanted or inappropriate images, the child can tap the three dots on that person's profile to report or block them. There are options to state why they're reporting that user, with a tailored reporting section under the 'harassment and sexual content' category. In this category, there's the option to report someone for 'harassment' to look, sexually explicit images or videos.

**Meet Our Expert**

Dr Claire Sutherland is an online safety consultant, educator and researcher who has developed and implemented anti-bullying and cyber safety policies for schools. She has written various academic papers and carried out research for the Australian Government comparing internet use and sexting behaviour of young people in the UK, USA and Australia.

**#WakeUpWednesday**

**The National College**

Source: See full reference list on guide page at [nationalcollege.com/guides/snapchat](https://nationalcollege.com/guides/snapchat)

Follow us on social media: [@wake\\_up\\_weds](https://twitter.com/wake_up_weds), [www.thenationalcollege.com](https://www.thenationalcollege.com), [@wake.up.wednesday](https://www.instagram.com/wake.up.wednesday), [@wake.up.weds](https://www.facebook.com/wake.up.weds)

None of this guide do so at their own discretion. No liability is entered into. Current as of the date of release: 07.09.2025



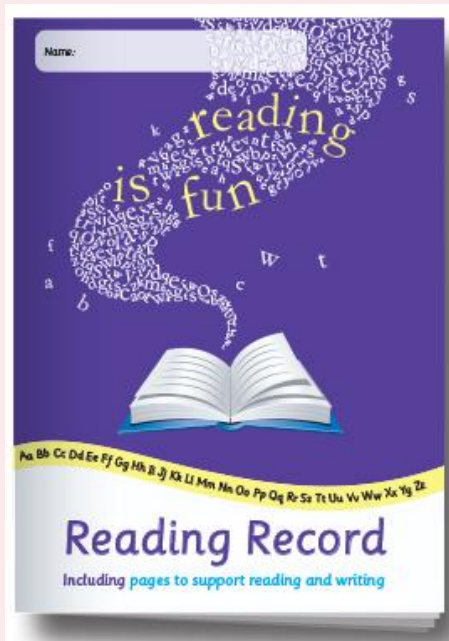
- Each week we send out a leaflet from Wake up Wednesday.
- This will cover online topics such as
  - Whatsapp
  - Tiktok
  - Youtube
  - AI
  - And many more
- Please take the time to read this each week
- We also share it on Instagram



# Reading



- Daily reading at home is essential.
- Recording in Reading Records.
- Opportunities for pleasure for reading in class to develop a love of reading.
- Whole Class Guided Reading.
- High-quality texts.
- Book bands/Free readers





# Handwriting - Letter Join



Logins will be sent home to support your child with letter formation and cursive handwriting.

a b c d e

f g h i j k

l m n o p

q r s t u

v w x y z

## Letter-join Pupil log-in

Dear Parents,

Our school is now part of the Letter-join handwriting scheme and our pupils can log in to the Letter-join website at home on iPads, tablets and computers.

There you will find the same, easy-to-use handwriting resources that we use at school.



### PC DESKTOP AND LAPTOP LOG-IN

Log in at [www.letterjoin.co.uk](http://www.letterjoin.co.uk) and use the Desktop log-in option with these details:

Username: **lj2061**  
Password: **home**

### PC Browsers:

Letter-join will work on the following browsers on PCs/Macs:

- Google Chrome
- Safari

Do not use Internet Explorer.

### IPAD AND TABLET LOG-IN

Go to [www.letterjoin.co.uk](http://www.letterjoin.co.uk) and use the Tablet log-in option with these details:

Username:  
Swipe code  
(starting at top left):



### Tablet/iPad Browsers:

Letter-join will run on the following tablets:

- iPads running iOS7 and above through the Safari browser.
- Windows 8 tablets (8 inch and bigger) using the built-in browser.
- Android tablets (8 inch and bigger) using Google Chrome.

### Choose a Classroom



Once logged-in, choose your child's classroom and you can use Letter-join's resources and fun activities to reinforce the handwriting we teach at school. You can trace over the letters and words and play the games on your tablet.

We are limited to the number of users who can log in to this account, so please do not share these log-in details.

Access using the QR code



# Power Maths



Ash



Flo



Astrid



Dexter



Sparks



## Year 5- Yearly Overview



Week	Term		
	Autumn	Spring	Summer
1	Unit 1: Place value within 1,000,000 (1) (8 lessons)	Unit 7: Multiplication and division (2) (10 lessons)	Unit 12: Geometry – properties of shapes (12 lessons)
2			
3	Unit 2: Place value within 1,000,000 (2) (6 lessons)	Unit 8: Fractions (3) (7 lessons)	Unit 13: Geometry – position and direction (6 lessons)
4			
5	Unit 3: Addition and subtraction (12 lessons)	Unit 9: Decimals and percentages (15 lessons)	Unit 14: Decimals (15 lessons)
6			
7	Unit 4: Multiplication and division (1) (10 lessons)	Unit 10: Measure – perimeter and area (8 lessons)	Unit 15: Negative numbers (4 lessons)
8			
9	Unit 5: Fractions (1) (8 lessons)	Unit 11: Graphs and tables (6 lessons)	Unit 16: Measure – converting units (10 lessons)
10			
11	Unit 6: Fractions (2) (11 lessons)		Unit 17: Measure – volume and capacity (3 lessons)
12			





*Research shows that children spend up to 20% or 1.4 years of their time in school at play.*

*Changes in society such as heavier traffic, busier lifestyles, fewer spaces for play, increased technology and heightened awareness of risk have led to a significant erosion in children's opportunities for play for many of today's children. This makes their play opportunities at school even more vital.*



- Play is critical to children's health and wellbeing,
- Essential for children's physical, emotional, social, spiritual and intellectual development.
- Play enables children to explore the physical and social environment, as well as different concepts and ideas.
- Play enhances children's self-esteem
- Play helps children's understanding of others
- Play requires ongoing communication and negotiation skills, enabling children to develop a balance between their right to act freely and their responsibilities to others.
- Play enables children to experience a wide range of emotions and develop their ability to cope with these, including sadness and happiness, rejection and acceptance, frustration and achievement, boredom and fascination, fear and confidence.
- Play encourages self-confidence and the ability to make choices, problem solve and to be creative.
- Play maintains children's openness to learning, develops their capabilities and allows them to push the boundaries of what they can achieve.
- Play leads to happier, fulfilled children who enjoy coming to school



#### Future Plans:

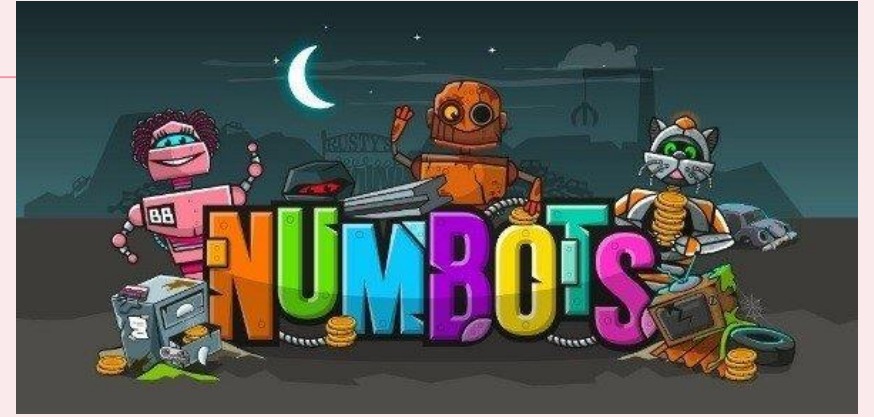
- Sand Pit
- Scooter park
- Rope Park
- Large Den Building
- Digging Areas
- Wellie Sheds
- Social Spaces
- Wild Spaces



# Online platforms



**ClassDojo**



Letter-join 



stalbertscatholicprimaryschool



@StalbertsRC

# Behaviour

- Children have dojos which are used to celebrate good behaviour throughout the day. The points will collate throughout the year with the opportunity to 'spend' these.
- Verbal warning
- Yellow cards
- Red cards



**ClassDojo**



## PGL Trip 2026

April 27<sup>th</sup>-29<sup>th</sup> April 2026

Cost: £130

Deposit: £30- 23<sup>rd</sup> Oct

2<sup>nd</sup> payment: £50- 19<sup>th</sup> Dec

3<sup>rd</sup> payment: £50- 27<sup>th</sup> March



# House Keeping

- Snack money is £1 a week.
- Please ensure your medical forms and photo consent forms are up to date in the office.
- Coats and wellies!
- Old Top for art lessons (painting)
- PE - Thursday and another day (which will be confirmed and sent through text)
- Any questions - please just ask!
- Geography and Art Trips