

Growth and Green Fingers - Plants

Core Learning of this unit



vegetable patch



rose

People may grow **plants** in their **gardens** and care for them.

They may grow **flowering plants** or beans and seeds to grow for food.

When plants are grown for food, this may be called a herb garden or a **vegetable patch**.



poppy



sunflower



dandelion



daisy



buttercup

A wild plant will grow by itself. It does not need to be cared for.



deciduous



evergreen

Deciduous trees lose their leaves in autumn every year. Their leaves are generally broad, flat and have veins running through them.

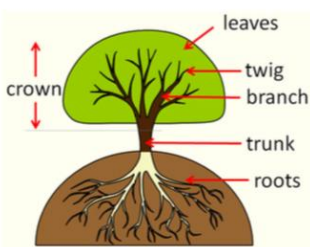
Evergreen trees have green leaves all year round. Their leaves are normally thick, waxy and narrow like needles.

Prior learning

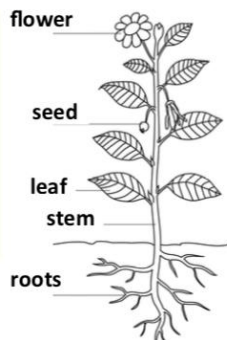
Foundation Stage: Understanding of the world.

- **Plants** can grow
- Deciduous trees lose their leaves in the autumn and winter.

Vocabulary	Definition
branches	parts that grow out from the tree trunk and have leaves, flowers, or fruit growing on them.
bulb	a root shaped like an onion that grows into a flower or plant .
deciduous	a tree that loses its leaves in the autumn every year
evergreen	a tree or bush which has green leaves all the year round
flower	the part of a plant which is often brightly coloured and grows at the end of a stem
fruit	something which grows on a tree or bush and which contains seeds or a stone covered by a substance that you can eat
leaf / leaves	the parts of a tree or plant that are flat, thin, and usually green
petal	thin coloured or white parts which form part of the flower
plant	a living thing that grows in the earth and has a stem, leaves, and roots
roots	the parts of a plant that grow under the ground
seed	the small, hard part from which a new plant grows
stem	the thin, upright part of a plant on which the flowers and leaves grow
tree	a tall plant that has a hard trunk, branches, and leaves
trunk	The large main stem from which the branches grow
wild	Animals or plants that live or grow in natural surroundings and are not looked after by people



The parts of common trees and plants.



Working Scientifically

- Plant a bean or a seed and watch it grow.
- Go on a wild plant hunt! Create a tally chart to show how many of each plant you have found.
- Plant some garden plants, care for them and watch them grow.
- Go on a tree hunt – what types of tree can you see? Collect fallen leaves and identify which tree they came from using pictures to help you. Sort the leaves between deciduous and evergreen trees.
- Label the parts of a plant showing where the leaves, flowers, petals, fruit, roots, bulb, seed, trunk, branches, and stems are.