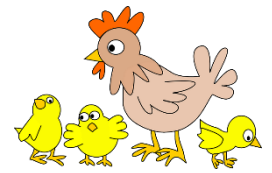




# St Albert's Catholic Primary School

## Weekly Newsletter Friday, 20 January 2023

[www.stalbertsprimary.co.uk](http://www.stalbertsprimary.co.uk)



### Y5 PGL

Our Y5 class will be going on their trip to PGL on Monday 6<sup>th</sup> February to Wednesday 8<sup>th</sup> of February. Please ensure that you have **paid the full amount of £120 before Friday 3<sup>rd</sup> February**. Parents can now pay for this via ParentPay. If you are unsure of how much you owe, then please contact school office.

Please also remember that your child will need to take a sleeping bag and pillow with them to PGL.

### Y6 London

On Monday 27<sup>th</sup> February to Wednesday 1<sup>st</sup> March our Y6 class will be going to London. Can you please ensure that the **full payment of £240 is paid before Friday 24<sup>th</sup> February**. Parents can now pay for this via ParentPay. If you are unsure of how much you owe, then please contact school office.



### Breakfast Club- Price Increase

As you will be aware, cost of food and wages have increased significantly over the past few years. This is having an impact on our school budget, and so it is with regret we have to inform you that the price of Breakfast Club will be increasing from £1.50 to £2 per child, per day. This increase will occur after the Easter break in April.

### Teacher Strike Action

You may be aware of the forthcoming strike action by some teaching unions. We will keep you fully informed of this as things proceed but at this stage it is likely that there will be partial closures at St Albert's. Unfortunately, at this stage, we cannot be more specific besides informing you of the planned strike dates.

**1<sup>st</sup> February**  
**28<sup>th</sup> February**  
**15<sup>th</sup> March**  
**16<sup>th</sup> March**



Please be mindful of these and we will send further information as soon as possible.

### Dinner and Breakfast Club

Reminder to make sure that any Dinner and Breakfast Club debt is paid to avoid it getting to a substantial amount. If you are unsure of what you owe, then please contact school office.

### Y5 Farm Trip

Year 5 visited Red House Farm in Altrincham this week to learn all about organic farming and how it differs from intensive farming. They had a wonderful time discovering how livestock are reared and how fruits and vegetables reach our plates. A big thank you to Country Trust for helping us to organise our visit.

### Y3 CLC

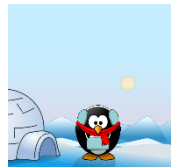
Yesterday Y3 spent the day working on the iPads creating books about the Rainforest. The children had a fantastic day. Thank you to Ian from the CLC for coming in.

### Level 3 Weather Warning

We have received a weather warning from the Met Office for severe cold weather/icy conditions between Friday 20<sup>th</sup> January and Wednesday 25<sup>th</sup> January. If you require more information, then please see the link below.

<https://www.metoffice.gov.uk/public/weather/cold-weather-alert/?tab=coldWeatherAlert&season=normal#?tab=coldWeatherAlert>

please give yourself more time to get to school on time during this predicted cold spell.



### Message from the NHS

At the back of this newsletter there is a leaflet from the NHS with information of when you should and should not keep your child off school.

### Guitar Club at St Edmund Arrowsmith

Knowsley Music and Performing Arts Service are excited to announce a new guitar club taking place at St Edmund Arrowsmith Catholic Academy in Whiston on Mondays, 4.00pm – 5.00pm. All pupils are welcome, sessions are with Mr Brennan and are FREE of charge, relaxed and fun! We can supply a guitar if you don't already have one. Please contact Phil Nicholas on **07815722291** or at **Phil.Nicholas@knowsley.gov.uk** if your child would like to attend, booking is essential as places are limited.

### Attendance and Punctuality

This week we have seen a substantial decrease in attendance and punctuality. We have had 153 instances of children being late this week, which amounted to 36 hours of teaching time being missed. This is not acceptable and needs to be improved.

### **Remember "5 to 9 is St Albert's Time"**

#### This Weeks Attendance

Rec	93.2%
Y1	88.3%
Y2	95.4%
Y3	83.7%
Y4	91.6%
Y5	92.1%
Y6	84.6%

*At St. Albert's, our mission is walking together with Jesus to*  
**LOVE, LEARN AND SERVE**

*Our vision centres around the 'CHILD'*

*C for the Child, H for High Expectations, I for Inspirational & Memorable, L for Listening and D for Dreams and Doors.*

**St Albert's Catholic Primary School**  
***Weekly Newsletter Friday, 20 January 2023***  
***www.stalbertsprimary.co.uk***

*At St. Albert's, our mission is walking together with Jesus to*  
***LOVE, LEARN AND SERVE***

*Our vision centres around the 'CHILD'*

***C for the Child, H for High Expectations, I for Inspirational & Memorable, L for Listening and D for Dreams and Doors.***