



Title: The art of food

Teacher : Mr Breen

Year 4

Term Autumn 2

Key Knowledge/Interesting facts

Topic Specific: Science - Animals including Humans

Vocabulary

Definition

Your mouth produces about one litre of saliva each day!

Human teeth are just as strong as shark teeth.

The enamel on our teeth is the hardest substance in the human body

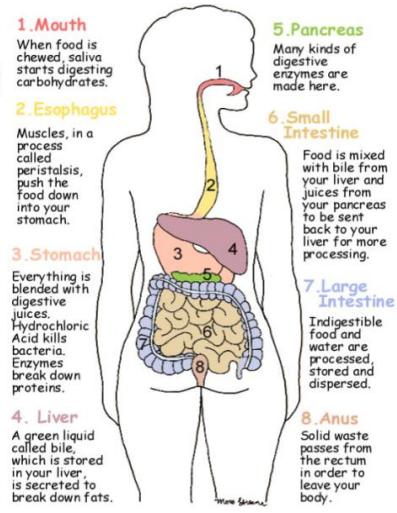
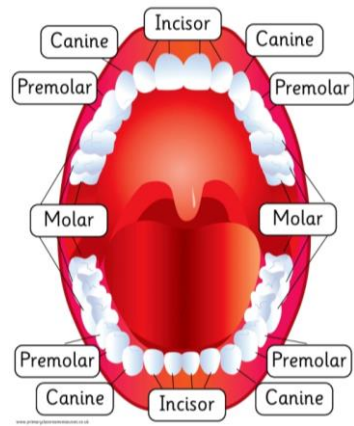
When we are born, we don't have teeth. The first set, known as 'baby teeth' slowly grow in and they total to twenty teeth. When our adult teeth grow in we have a total of thirty two teeth.

If you were to stretch your digestive system out it would be 29 feet long.

When you eat food, it takes seven seconds to reach your stomach.

After you eat, it takes about six to eight hours for food to pass through your stomach and small intestine. Food then enters your large intestine (colon) for further digestion, absorption of water and, finally, elimination of undigested food

Links
English - James and the Giant Peach by Roald Dahl
Writing - Persuasive advert (best toothpaste)
Art - Still life drawing of healthy foods



Canine

A pointed tooth between the incisors and premolars of a mammal, often greatly enlarged in carnivores.

Incisor

A narrow-edged tooth at the front of the mouth, adapted for cutting. In humans there are four incisors in each jaw.

Molar

A grinding tooth at the back of a mammal's mouth.

Plaque

a film of saliva, mucus, bacteria, and food residues that builds up on the surface of teeth and can cause gum disease

Digest

Break down food into substances that can be absorbed and used by the body.

Food chain

A series of living beings in which each serves as food for the next. Bats eat insects, and so are above them in the food chain.

Producers

A living thing which makes its own food.

Predators

A living thing which eats/hunts other living things

Prey

An animal or animals caught, killed, and eaten by another animal as food.

herbivore

An animal which only eats plants.

carnivore

An animal which eats meat.

omnivore

An animal which eats both meat and plants

WOW Activity:
Disclosing tablets - healthy teeth
Art Gallery Visit - Still life drawing
Science - Create a digestive system model