



# Britten's Got Talent and Light

# Year 6 Miss Ashdown

## Key Knowledge-Music

Edward Benjamin Britten was an English composer, conductor and pianist

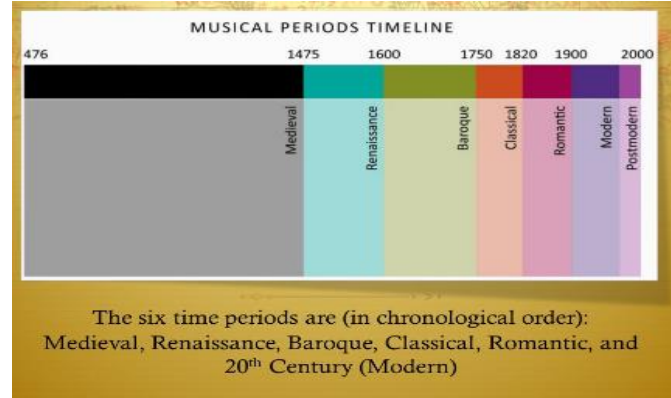
Britten wrote the War Requiem for the reconsecration of Coventry Cathedral, which was destroyed during the Battle of Britain in World War II.

Britten was a pacifist. A pacifist is a person who believes that war and violence are unjustifiable.

### Peter Grimes (1945)

This was Britten's first full-scale opera which focuses in on the tragic life of a lonely fisherman

He is considered to be one of the greatest composers of the 20th century.



## Key Knowledge-Science

Light travels in straight lines. Objects are seen because they give out or reflect light into the eye.

We see things because the light travels from light sources to our eyes or from light sources to objects and then to our eyes.

Shadows have the same shape as the objects that cast them.

When light from an object is reflected by a surface, it changes direction. It bounces off the surface at the same angle as it hits it.

Smooth, shiny surfaces such as mirrors and polished metals reflect light well. Dull and dark surfaces such as dark fabrics do not reflect light well.

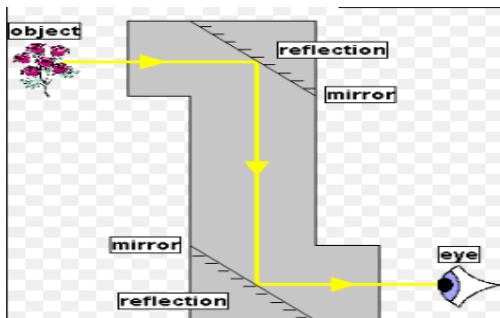
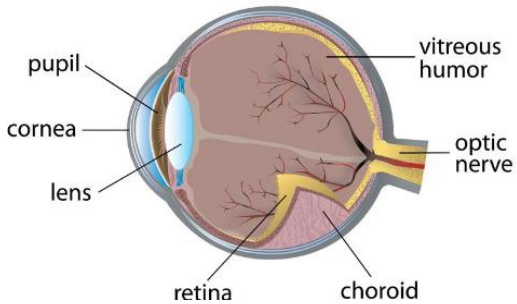
Inside the eye is a lens which focuses the light onto a surface (the retina) at the back of the eyeball.

The retina and is made up of special cells which detect light and send messages to our brain, allowing us to see.

When we have our eyes tested, an optician shines a light into our eye and uses a magnifying lens. This shows the optician the blood vessels on the surface of the retina and the light-sensitive cells.

A human eye has more than a million light-sensitive cells.

## Parts of the Human Eye



Vocabulary	Definition
Ostinati	repeated melody lines.
Pitch	the degree of highness or lowness of a tone.
Tempo	the speed at which a passage of music is or should be played.
Crescendo	gradually getting louder
Diminuendo	gradually getting quieter
Composer	a person who writes music
Pulse	a steady beat
Rhythm	a pattern of notes
Orchestra	a group of instrumentalists, combining string, woodwind, brass, and percussion sections and playing classical music.
Opaque	not able to be seen through.
Translucent	allowing light, but not detailed shapes, to pass through.
Transparent	allowing light to pass through so that objects behind can be seen.
Shadow	a dark area or shape produced by a body coming between rays of light and a surface
Reflective	throw back light without absorbing it.
Absorb	to take in or soak up.
Iris	the coloured part of the eye that surrounds the pupil. It controls how much light enters the eye by changing the size of the pupil.
Retina	a light-sensitive inner lining at the back of the eye.
Periscope	an instrument people use to look at things from a hidden position.